



## SITE PLAN



### LIST OF FACILITIES

#### MIDTOWN BAY LEVEL 07

- |                     |                          |
|---------------------|--------------------------|
| 1 – POOL GARDEN     | 7 – FOLIAGE GARDEN       |
| 2 – PAVILION        | 8 – LAWN GARDEN          |
| 3 – POOL DECK       | 9 – M&E SPACE AND GENSET |
| 4 – FITNESS AREA    | 10 – MANAGEMENT OFFICE   |
| 5 – GARDEN COURT    | 11 – ACCESSIBLE WASHROOM |
| 6 – WELLNESS GARDEN | 12 – OUTDOOR SHOWER      |

#### MIDTOWN BAY LEVEL 25

- |                             |
|-----------------------------|
| 13 – SKYLINE TERRACE        |
| 14 – BAYVIEW TERRACE        |
| 15 – GARDEN TERRACE         |
| 16 – RESIDENTIAL LIFT LOBBY |
| 17 – ACCESSIBLE WASHROOM    |

#### MIDTOWN BAY ROOF

- |                  |
|------------------|
| 18 – WATER TANKS |
|------------------|

#### LEVEL 01

- |                   |
|-------------------|
| 19 – DROP OFF     |
| 20 – PAVILION     |
| 21 – WATER GARDEN |

#### ROOF / LEVEL 07

- |                        |
|------------------------|
| 22 – 40M LAP POOL      |
| 23 – POOL DECK LOUNGES |
| 24 – MEETING ROOM      |

#### LEVEL 07

- |  |
|--|
| 25 – REFRESHMENT AREA                      |
| 26 – EVENT TERRACE                         |
| 27 – SOCIAL CORNER                         |
| 28 – FITNESS HUB                           |
| 29 – BAMBOO GARDEN WITH 100M JOGGING TRACK |
| 30 – RELAX SANCTUM                         |

#### GENERAL

- |                                 |
|---------------------------------|
| 31 – MIDTOWN SQUARE             |
| 32 – MIDTOWN HOUSE              |
| 33 – MARKET PLACE               |
| 34 – MIDTOWN HUB                |
| 35 – GUOCO MIDTOWN OFFICE TOWER |

UNIT DISTRIBUTION

UNIT / FLOOR	1	2	3	4	5	6	7	8	9	10
32	B2-DP	B5-DP	B6-DP	B6a-DP	B1a-DP	B1-DP	B7a-DP	B7-DP	B4-DP	B3-DP
30	B2-DP	B5-DP	B6-DP	B6a-DP	B1a-DP	B1-DP	B7a-DP	B7-DP	B4-DP	B3-DP
28	B2-DP	B5-DP	B6-DP	B6a-DP	B1a-DP	B1-DP	B7a-DP	B7-DP	B4-DP	B3-DP
26	B2-DP	B5-DP	B6-DP	B6a-DP	B1a-DP	B1-DP	B7a-DP	B7-DP	B4-DP	B3-DP
25	SKY TERRACE									
24	B2	A1a	A3	A3a	B1a	B1	A2a	A2	A1	B3
23	B2	A1a	A3	A3a	B1a	B1	A2a	A2	A1	B3
22	B2	A1a	A3	A3a	B1a	B1	A2a	A2	A1	B3
21	B2	A1a	A3	A3a	B1a	B1	A2a	A2	A1	B3
20	B2	A1a	A3	A3a	B1a	B1	A2a	A2	A1	B3
19	B2	A1a	A3	A3a	B1a	B1	A2a	A2	A1	B3
18	B2	A1a	A3	A3a	B1a	B1	A2a	A2	A1	B3
17	B2	A1a	A3	A3a	B1a	B1	A2a	A2	A1	B3
16	B2	A1a	A3	A3a	B1a	B1	A2a	A2	A1	B3
15	B2	A1a	A3	A3a	B1a	B1	A2a	A2	A1	B3
14	B2	A1a	A3	A3a	B1a	B1	A2a	A2	A1	B3
13	B2	A1a	A3	A3a	B1a	B1	A2a	A2	A1	B3
12	B2	A1a	A3	A3a	B1a	B1	A2a	A2	A1	B3
11	B2	A1a	A3	A3a	B1a	B1	A2a	A2	A1	B3
10	B2	A1a	A3	A3a	B1a	B1	A2a	A2	A1	B3
9	B2	A1a	A3	A3a	B1a	B1	A2a	A2	A1	B3
8	B2	A1a	A3	A3a	B1a	B1	A2a	A2	A1	B3
7	B2	A1a	A3	A3a	B1a	B1	A2a-G		A1-G	B3-G
6	CAR PARK									
5	CAR PARK									
4	CAR PARK									
3	CAR PARK									
2	CAR PARK									
1	CAR PARK									

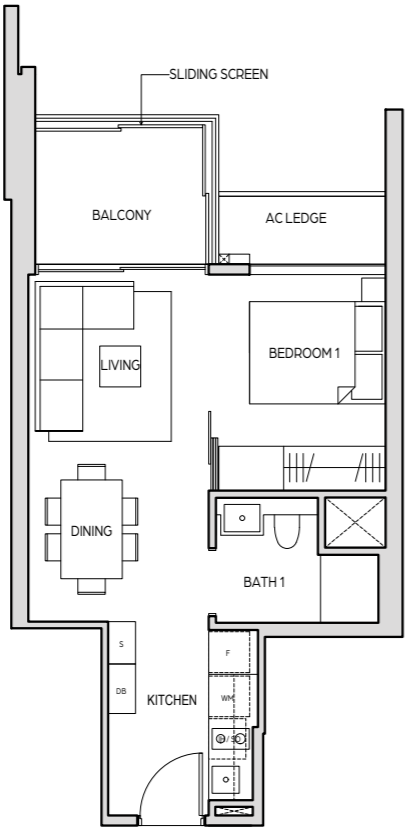
POOL GARDEN

1 BEDROOM



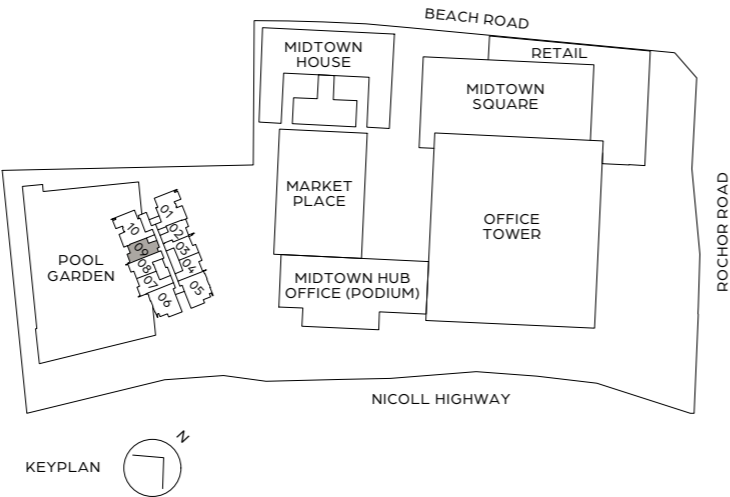
1 BEDROOM

TYPE A1  
44 sq m / 474 sq ft  
#08-09 to #24-09



LEGEND (WHERE APPLICABLE)

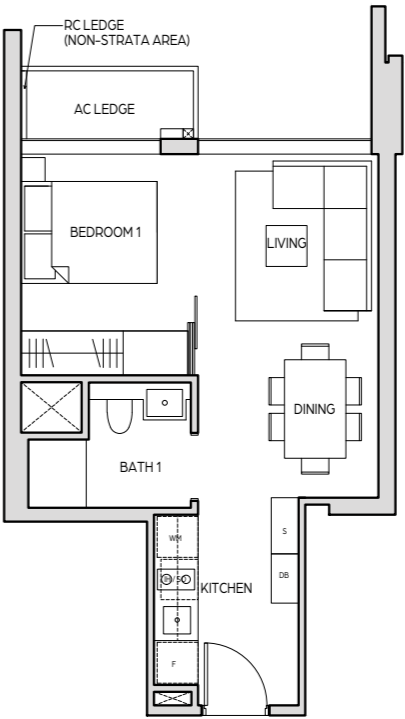
- |                             |                                |
|-----------------------------|--------------------------------|
| <b>F</b> – FRIDGE           | <b>DB</b> – DISTRIBUTION BOARD |
| <b>WM</b> – WASHING MACHINE | <b>IH</b> – INDUCTION HOB      |
| <b>S</b> – STORAGE          | <b>SO</b> – STEAM OVEN         |



All areas and measurements stated in this floor plan are approximate and subject to final survey. The layout / location of wardrobes, kitchen cabinets and appliances, DB, door swing directions and sanitary wares are subject to final design. BP Approval No. A1606-00001-2018-BP02 dated 10 June 2019

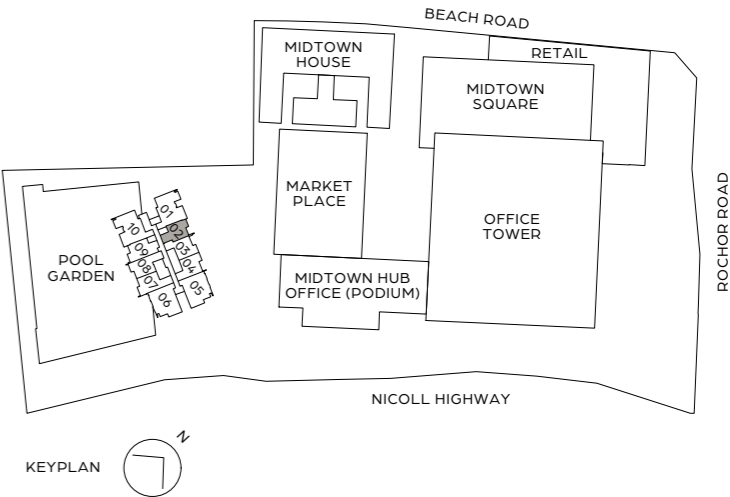
1 BEDROOM

TYPE A1a  
38 sq m / 409 sq ft  
#07-02 to #24-02



LEGEND (WHERE APPLICABLE)

- |                             |                                |
|-----------------------------|--------------------------------|
| <b>F</b> – FRIDGE           | <b>DB</b> – DISTRIBUTION BOARD |
| <b>WM</b> – WASHING MACHINE | <b>IH</b> – INDUCTION HOB      |
| <b>S</b> – STORAGE          | <b>SO</b> – STEAM OVEN         |



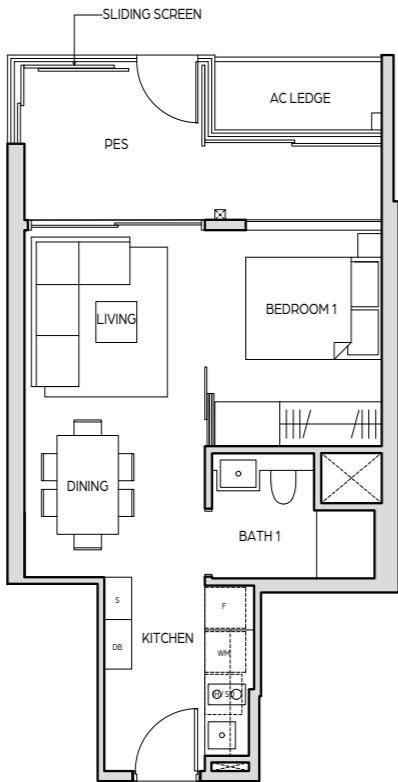
All areas and measurements stated in this floor plan are approximate and subject to final survey. The layout / location of wardrobes, kitchen cabinets and appliances, DB, door swing directions and sanitary wares are subject to final design. BP Approval No. A1606-00001-2018-BP02 dated 10 June 2019

1 BEDROOM

TYPE A1-G

48 sq m / 517 sq ft

#07-09



LEGEND (WHERE APPLICABLE)

- |                             |                                |
|-----------------------------|--------------------------------|
| <b>F</b> – FRIDGE           | <b>DB</b> – DISTRIBUTION BOARD |
| <b>WM</b> – WASHING MACHINE | <b>IH</b> – INDUCTION HOB      |
| <b>S</b> – STORAGE          | <b>SO</b> – STEAM OVEN         |

KEYPLAN



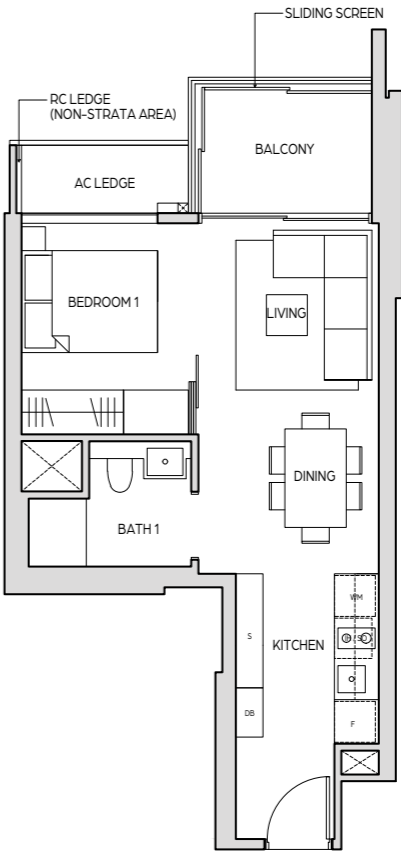
All areas and measurements stated in this floor plan are approximate and subject to final survey. The layout / location of wardrobes, kitchen cabinets and appliances, DB, door swing directions and sanitary wares are subject to final design. BP Approval No. A1606-00001-2018-BP02 dated 10 June 2019

1 BEDROOM

TYPE A2

45 sq m / 484 sq ft

#08-08 to #24-08



LEGEND (WHERE APPLICABLE)

- |                             |                                |
|-----------------------------|--------------------------------|
| <b>F</b> – FRIDGE           | <b>DB</b> – DISTRIBUTION BOARD |
| <b>WM</b> – WASHING MACHINE | <b>IH</b> – INDUCTION HOB      |
| <b>S</b> – STORAGE          | <b>SO</b> – STEAM OVEN         |

KEYPLAN



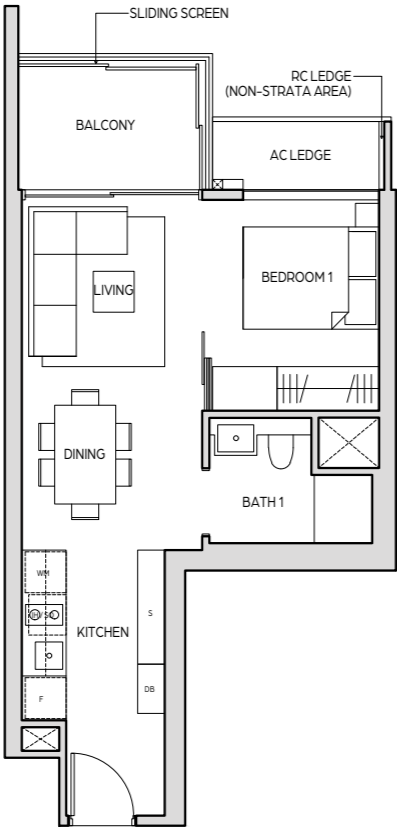
All areas and measurements stated in this floor plan are approximate and subject to final survey. The layout / location of wardrobes, kitchen cabinets and appliances, DB, door swing directions and sanitary wares are subject to final design. BP Approval No. A1606-00001-2018-BP02 dated 10 June 2019

# 1 BEDROOM

## TYPE A2a

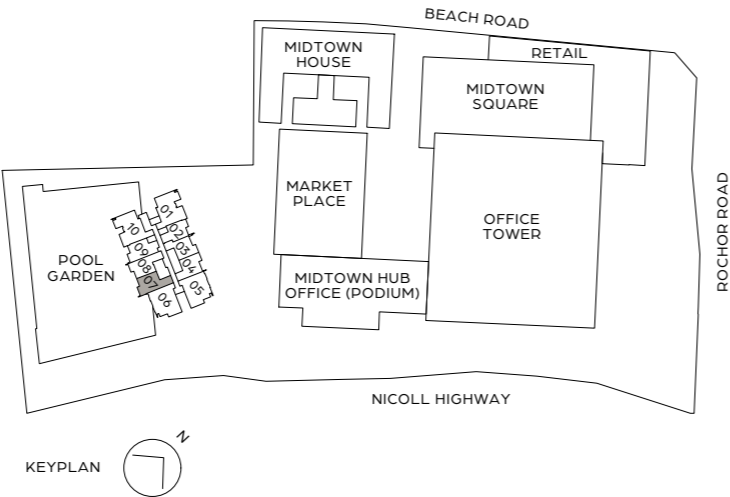
45 sq m / 484 sq ft

#08-07 to #24-07



### LEGEND (WHERE APPLICABLE)

- |                             |                                |
|-----------------------------|--------------------------------|
| <b>F</b> – FRIDGE           | <b>DB</b> – DISTRIBUTION BOARD |
| <b>WM</b> – WASHING MACHINE | <b>IH</b> – INDUCTION HOB      |
| <b>S</b> – STORAGE          | <b>SO</b> – STEAM OVEN         |



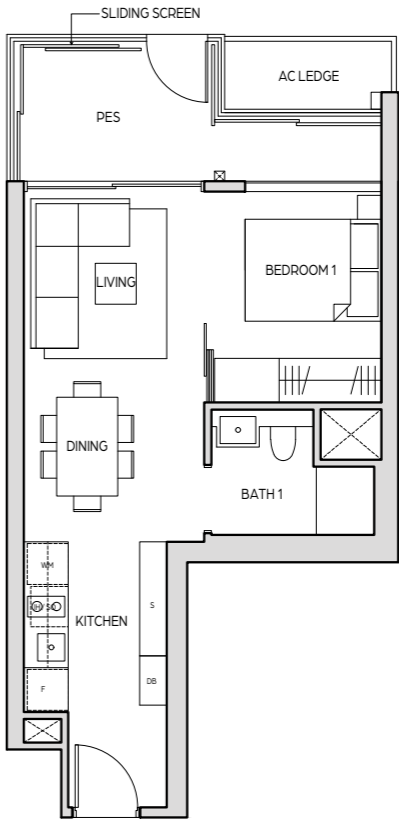
All areas and measurements stated in this floor plan are approximate and subject to final survey. The layout / location of wardrobes, kitchen cabinets and appliances, DB, door swing directions and sanitary wares are subject to final design. BP Approval No. A1606-00001-2018-BP02 dated 10 June 2019

# 1 BEDROOM

## TYPE A2a-G

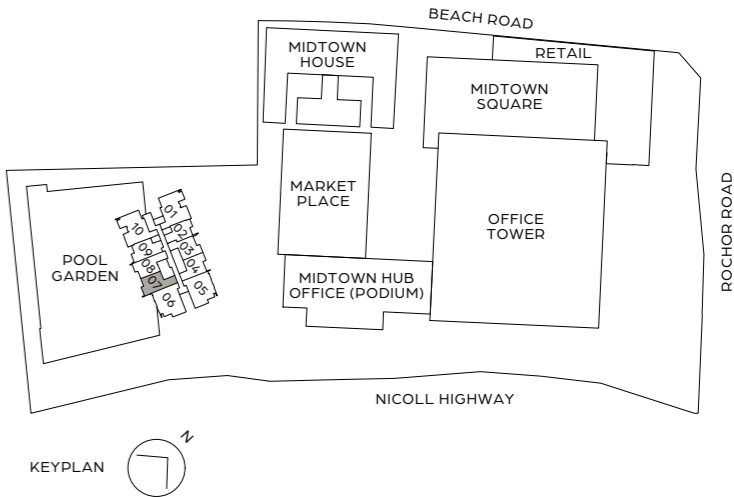
49 sq m / 527 sq ft

#07-07



### LEGEND (WHERE APPLICABLE)

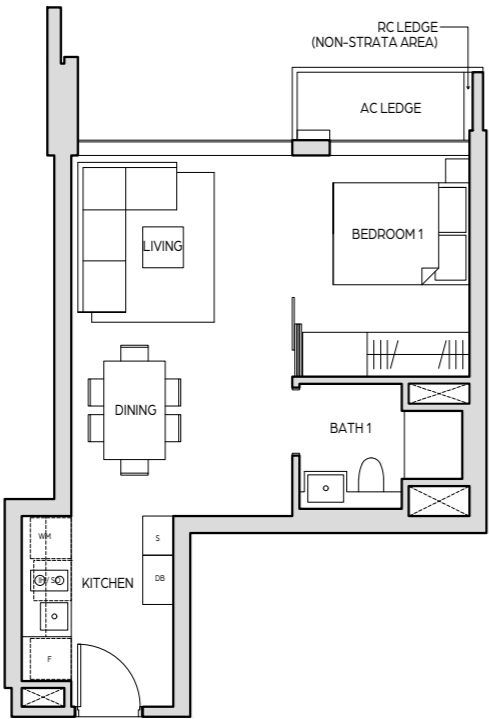
- |                             |                                |
|-----------------------------|--------------------------------|
| <b>F</b> – FRIDGE           | <b>DB</b> – DISTRIBUTION BOARD |
| <b>WM</b> – WASHING MACHINE | <b>IH</b> – INDUCTION HOB      |
| <b>S</b> – STORAGE          | <b>SO</b> – STEAM OVEN         |



All areas and measurements stated in this floor plan are approximate and subject to final survey. The layout / location of wardrobes, kitchen cabinets and appliances, DB, door swing directions and sanitary wares are subject to final design. BP Approval No. A1606-00001-2018-BP02 dated 10 June 2019

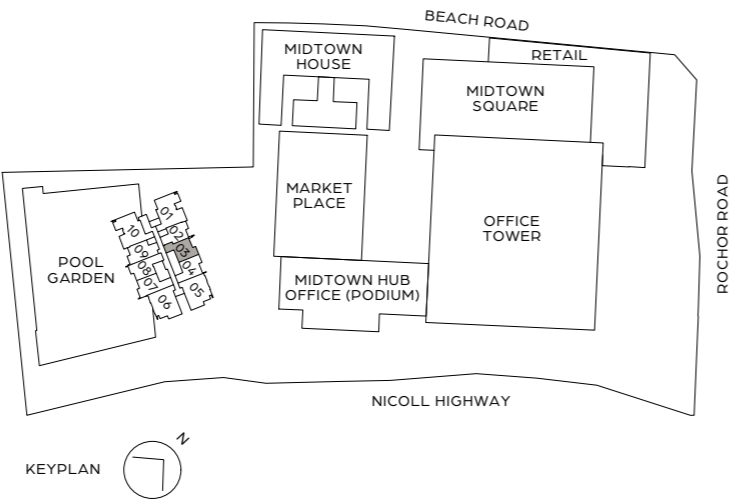
1 BEDROOM

**TYPE A3**  
43 sq m / 463 sq ft  
#07-03 to #24-03



**LEGEND (WHERE APPLICABLE)**

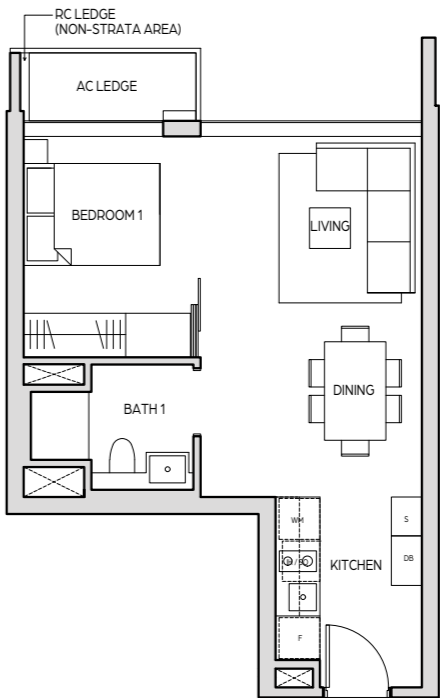
- |                             |                                |
|-----------------------------|--------------------------------|
| <b>F</b> – FRIDGE           | <b>DB</b> – DISTRIBUTION BOARD |
| <b>WM</b> – WASHING MACHINE | <b>IH</b> – INDUCTION HOB      |
| <b>S</b> – STORAGE          | <b>SO</b> – STEAM OVEN         |



All areas and measurements stated in this floor plan are approximate and subject to final survey. The layout / location of wardrobes, kitchen cabinets and appliances, DB, door swing directions and sanitary wares are subject to final design. BP Approval No. A1606-00001-2018-BP02 dated 10 June 2019

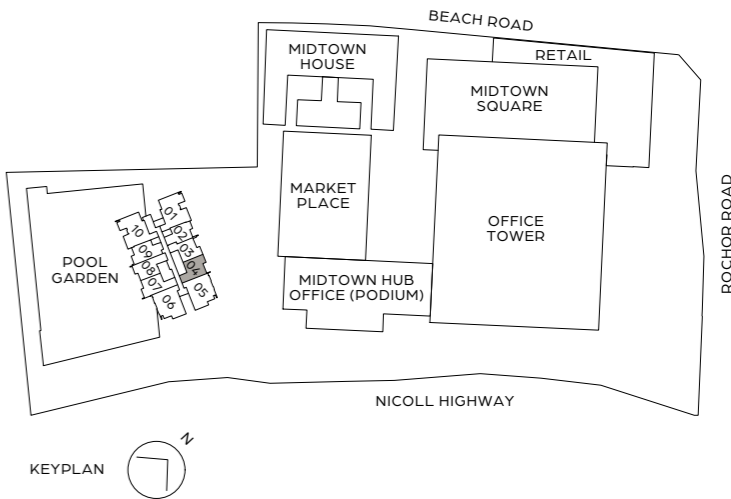
1 BEDROOM

**TYPE A3a**  
42 sq m / 452 sq ft  
#07-04 to #24-04



**LEGEND (WHERE APPLICABLE)**

- |                             |                                |
|-----------------------------|--------------------------------|
| <b>F</b> – FRIDGE           | <b>DB</b> – DISTRIBUTION BOARD |
| <b>WM</b> – WASHING MACHINE | <b>IH</b> – INDUCTION HOB      |
| <b>S</b> – STORAGE          | <b>SO</b> – STEAM OVEN         |



All areas and measurements stated in this floor plan are approximate and subject to final survey. The layout / location of wardrobes, kitchen cabinets and appliances, DB, door swing directions and sanitary wares are subject to final design. BP Approval No. A1606-00001-2018-BP02 dated 10 June 2019

2-BEDROOM

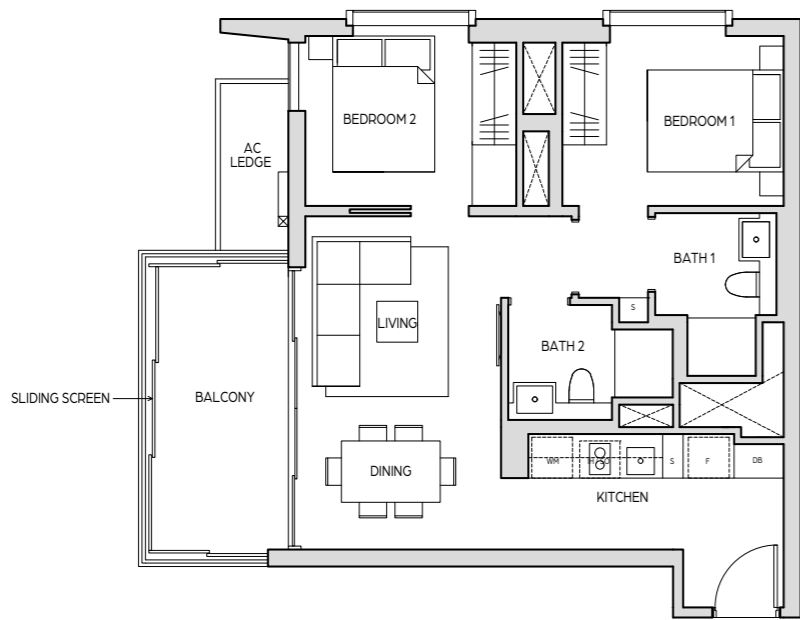


## 2-BEDROOM



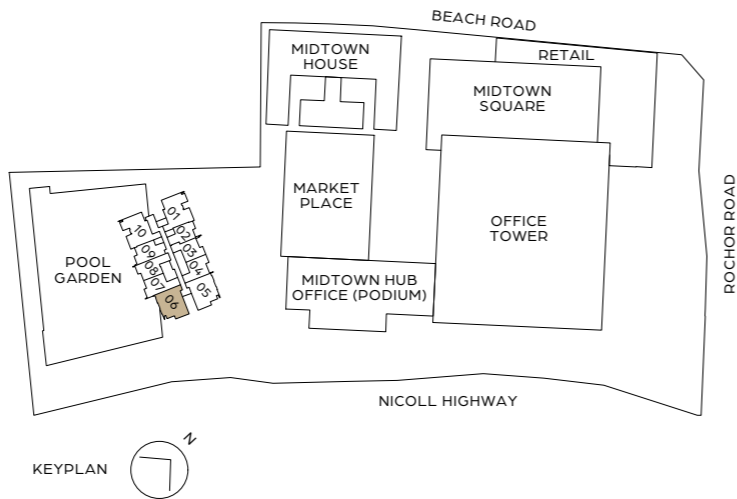
2 BEDROOM

TYPE B1  
68 sq m / 732 sq ft  
#07-06 to #24-06



LEGEND (WHERE APPLICABLE)

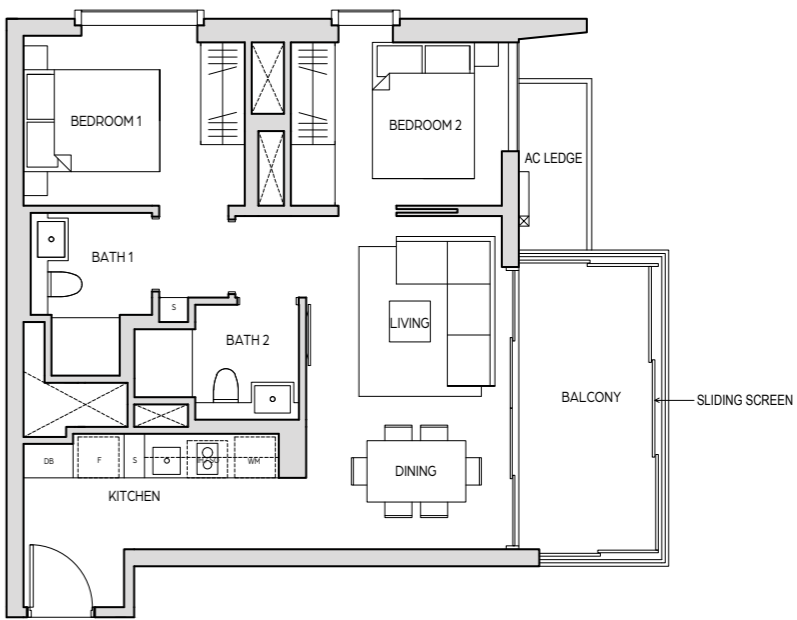
- |    |                   |    |                      |
|----|-------------------|----|----------------------|
| F  | - FRIDGE          | DB | - DISTRIBUTION BOARD |
| WM | - WASHING MACHINE | IH | - INDUCTION HOB      |
| S  | - STORAGE         | SO | - STEAM OVEN         |



All areas and measurements stated in this floor plan are approximate and subject to final survey. The layout / location of wardrobes, kitchen cabinets and appliances, DB, door swing directions and sanitary wares are subject to final design. BP Approval No. A1606-00001-2018-BP02 dated 10 June 2019

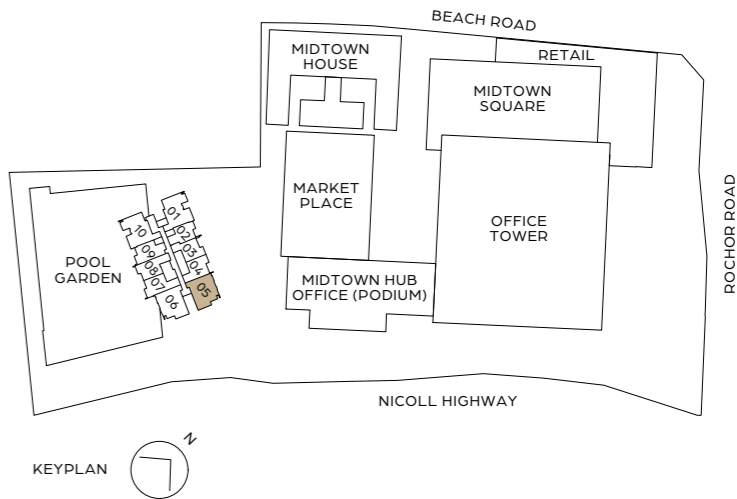
2 BEDROOM

TYPE B1a  
68 sq m / 732 sq ft  
#07-05 to #24-05



LEGEND (WHERE APPLICABLE)

- |    |                   |    |                      |
|----|-------------------|----|----------------------|
| F  | - FRIDGE          | DB | - DISTRIBUTION BOARD |
| WM | - WASHING MACHINE | IH | - INDUCTION HOB      |
| S  | - STORAGE         | SO | - STEAM OVEN         |



All areas and measurements stated in this floor plan are approximate and subject to final survey. The layout / location of wardrobes, kitchen cabinets and appliances, DB, door swing directions and sanitary wares are subject to final design. BP Approval No. A1606-00001-2018-BP02 dated 10 June 2019

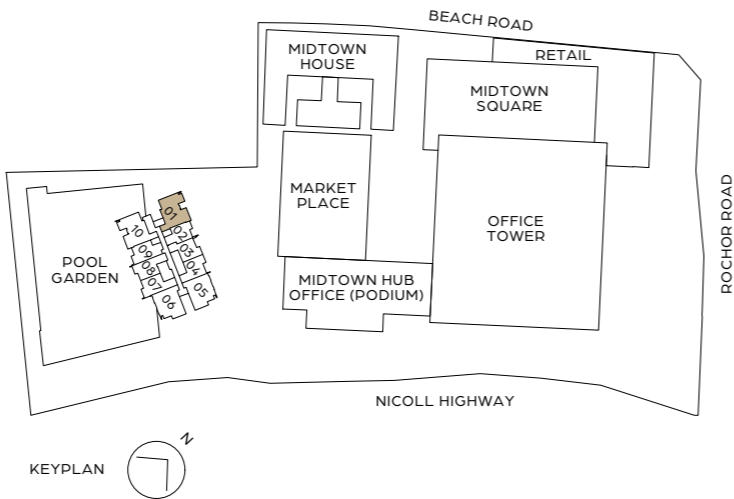
2 BEDROOM

TYPE B2  
69 sq m / 743 sq ft  
#07-01 to #24-01



LEGEND (WHERE APPLICABLE)

- |    |                   |    |                      |
|----|-------------------|----|----------------------|
| F  | - FRIDGE          | DB | - DISTRIBUTION BOARD |
| WM | - WASHING MACHINE | IH | - INDUCTION HOB      |
| S  | - STORAGE         | SO | - STEAM OVEN         |



All areas and measurements stated in this floor plan are approximate and subject to final survey. The layout / location of wardrobes, kitchen cabinets and appliances, DB, door swing directions and sanitary wares are subject to final design. BP Approval No. A1606-00001-2018-BP02 dated 10 June 2019

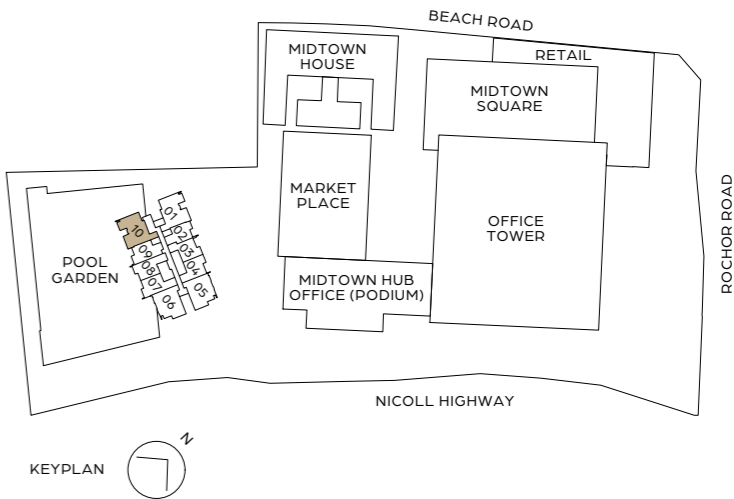
2 BEDROOM

TYPE B3  
70 sq m / 753 sq ft  
#08-10 to #24-10



LEGEND (WHERE APPLICABLE)

- |    |                   |    |                      |
|----|-------------------|----|----------------------|
| F  | - FRIDGE          | DB | - DISTRIBUTION BOARD |
| WM | - WASHING MACHINE | IH | - INDUCTION HOB      |
| S  | - STORAGE         | SO | - STEAM OVEN         |



All areas and measurements stated in this floor plan are approximate and subject to final survey. The layout / location of wardrobes, kitchen cabinets and appliances, DB, door swing directions and sanitary wares are subject to final design. BP Approval No. A1606-00001-2018-BP02 dated 10 June 2019

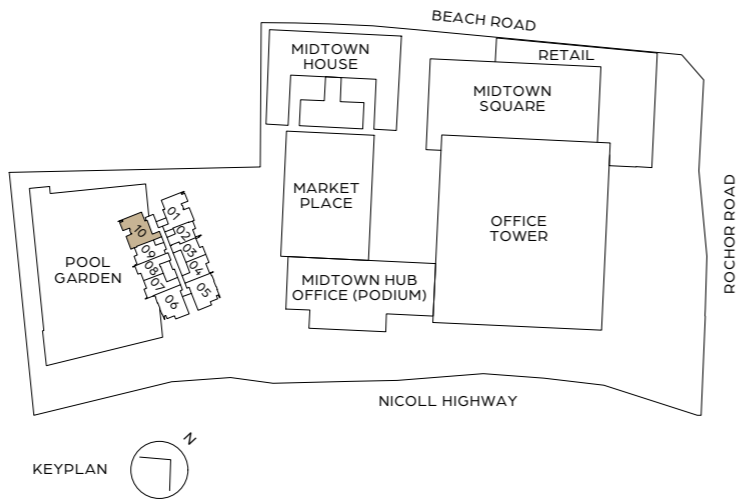
2 BEDROOM

TYPE B3-G  
72 sq m / 775 sq ft  
#07-10



LEGEND (WHERE APPLICABLE)

- |    |                   |    |                      |
|----|-------------------|----|----------------------|
| F  | – FRIDGE          | DB | – DISTRIBUTION BOARD |
| WM | – WASHING MACHINE | IH | – INDUCTION HOB      |
| S  | – STORAGE         | SO | – STEAM OVEN         |



All areas and measurements stated in this floor plan are approximate and subject to final survey. The layout / location of wardrobes, kitchen cabinets and appliances, DB, door swing directions and sanitary wares are subject to final design. BP Approval No. A1606-00001-2018-BP02 dated 10 June 2019

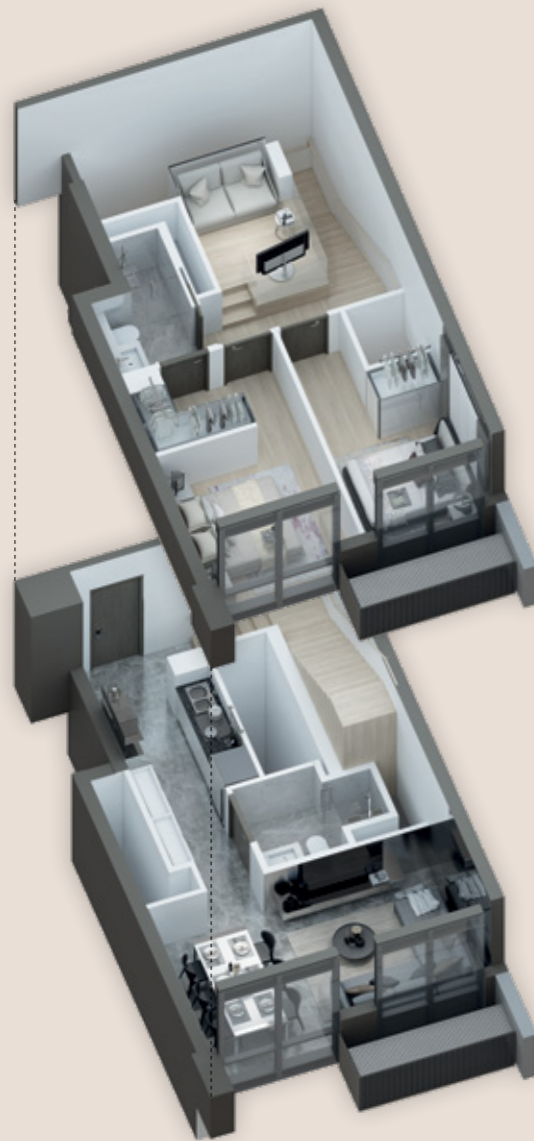




## DUPLEX UNITS

Rare duplex units in this prime location offer even greater flexibility and possibility of usage. Occupying level 25 and above, these choice units also boast unparalleled views towards Marina Bay, Kallang Basin, and the breathtaking surrounds.

## 2 BEDROOM DUPLEX SETUPS



### SETUP 1: RESIDENTIAL

The 2 bedroom duplex is a carefully thought out residential unit. Its upper floor comes complete with two well-sized bedrooms. Additionally, it has a built-in platform that can comfortably fit a sofa bed. This can easily become a guest bedroom, or be used as a study or cosy corner.

The lower level is well-proportioned with living, dining and entertaining spaces.



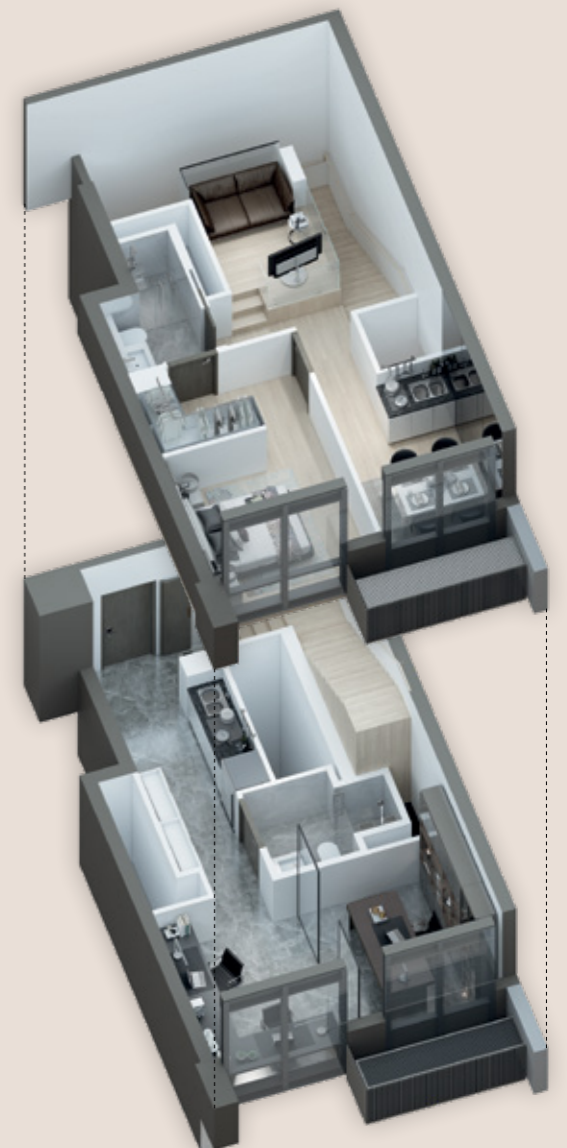
### SETUP 2: DUAL KEY\*

The duplex can also be used as a dual key unit, where each floor becomes a separate dwelling. One of the bedrooms in the upper floor can even be converted into a living and dining room. Such a self-contained configuration opens up possibilities for the duplex to be used by different occupants/families.

### SETUP 3: HOME OFFICE\*\*

When used as a home office, the upper level becomes a private sanctuary for living, dining and resting.

The lower level can accommodate a small office set up, with workstations and an enclosed director's room for discussions and meetings.



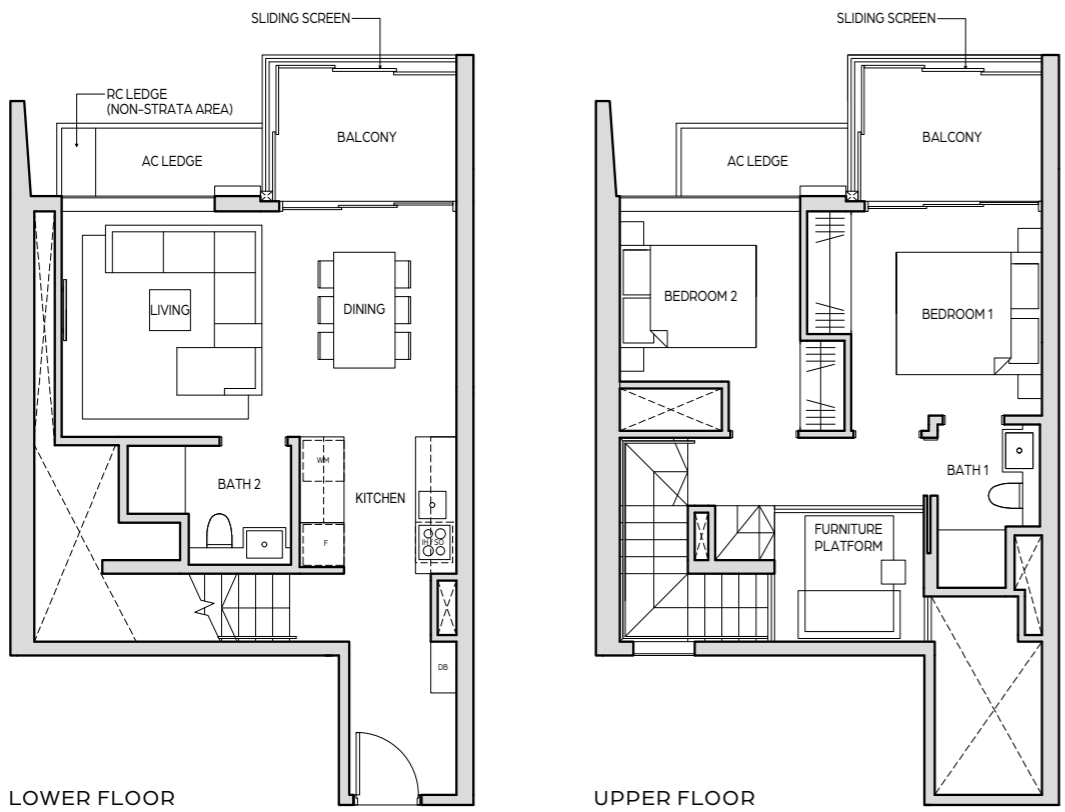
\*FLEXIBLE CONFIGURATION OPTION BY PURCHASER  
^PREVAILING HOME OFFICE GUIDELINES APPLY

2 BEDROOM DUPLEX

TYPE B2-DP

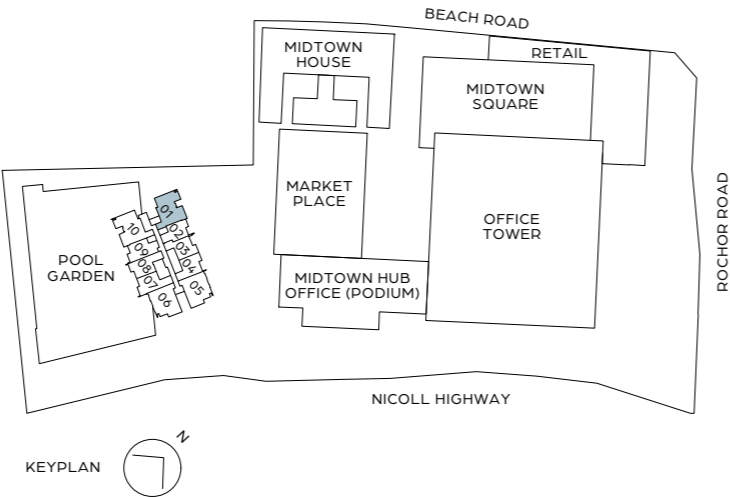
105 sq m / 1130 sq ft

#26-01 | #28-01 | #30-01 | #32-01



LEGEND (WHERE APPLICABLE)

- |                      |                         |
|----------------------|-------------------------|
| F - FRIDGE           | DB - DISTRIBUTION BOARD |
| WM - WASHING MACHINE | IH - INDUCTION HOB      |
| S - STORAGE          | SO - STEAM OVEN         |



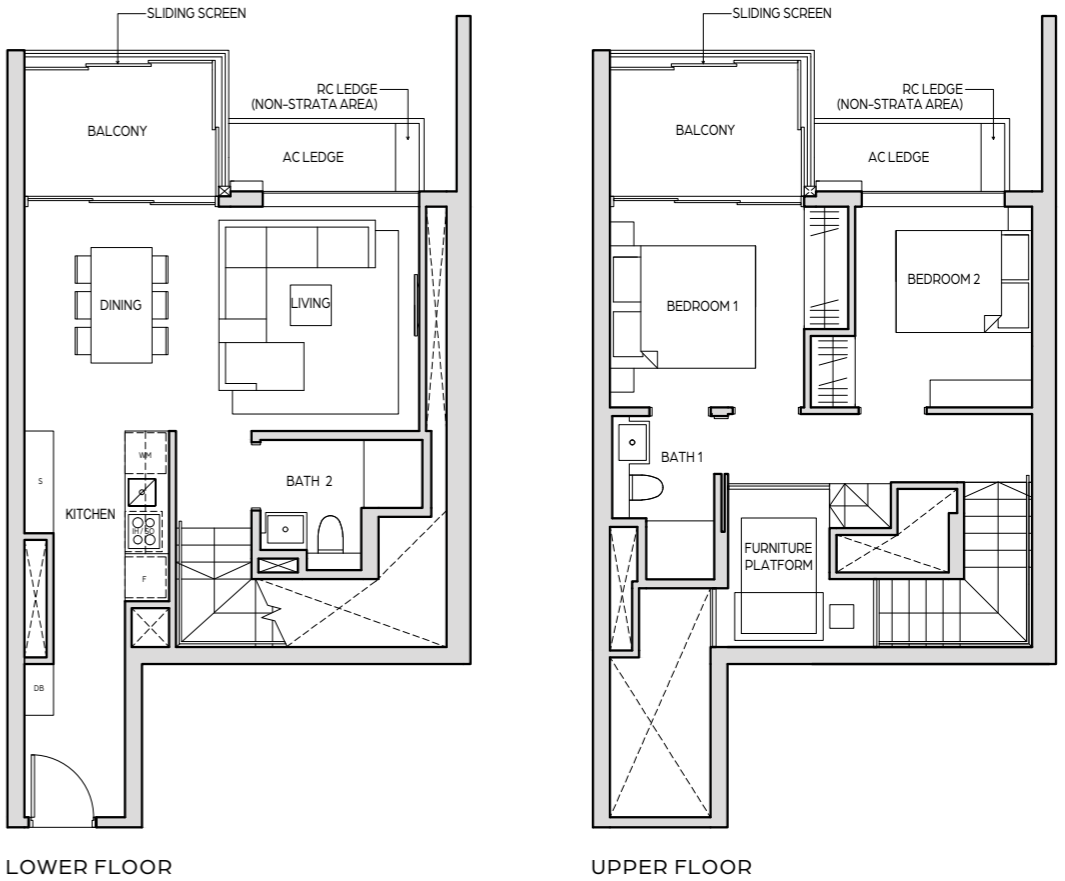
All areas and measurements stated in this floor plan are approximate and subject to final survey. The layout / location of wardrobes, kitchen cabinets and appliances, DB, door swing directions and sanitary wares are subject to final design. BP Approval No. A1606-00001-2018-BP02 dated 10 June 2019

2 BEDROOM DUPLEX

TYPE B3-DP

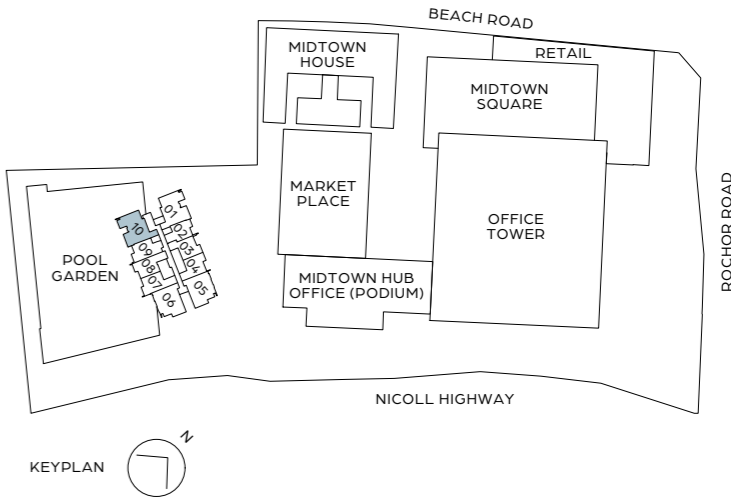
107 sq m / 1152 sq ft

#26-10 | #28-10 | #30-10 | #32-10



LEGEND (WHERE APPLICABLE)

- |                      |                         |
|----------------------|-------------------------|
| F - FRIDGE           | DB - DISTRIBUTION BOARD |
| WM - WASHING MACHINE | IH - INDUCTION HOB      |
| S - STORAGE          | SO - STEAM OVEN         |



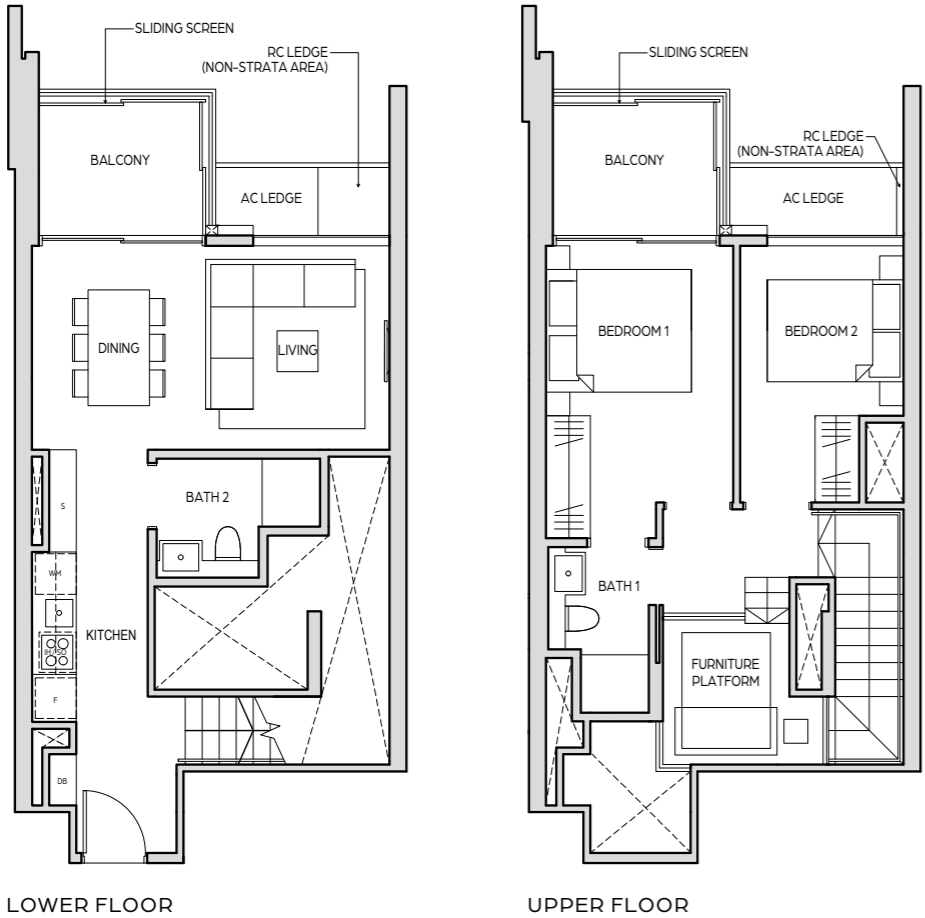
All areas and measurements stated in this floor plan are approximate and subject to final survey. The layout / location of wardrobes, kitchen cabinets and appliances, DB, door swing directions and sanitary wares are subject to final design. BP Approval No. A1606-00001-2018-BP02 dated 10 June 2019

2 BEDROOM DUPLEX

TYPE B4-DP

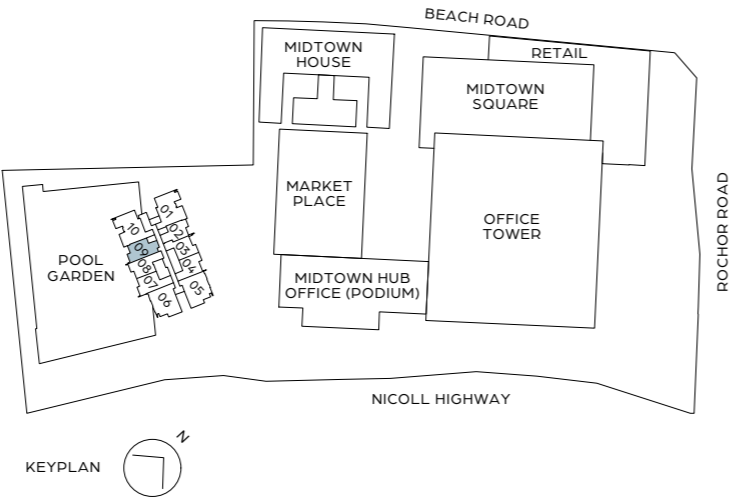
96 sq m / 1033 sq ft

#26-09 | #28-09 | #30-09 | #32-09



LEGEND (WHERE APPLICABLE)

- |                             |                                |
|-----------------------------|--------------------------------|
| <b>F</b> - FRIDGE           | <b>DB</b> - DISTRIBUTION BOARD |
| <b>WM</b> - WASHING MACHINE | <b>IH</b> - INDUCTION HOB      |
| <b>S</b> - STORAGE          | <b>SO</b> - STEAM OVEN         |



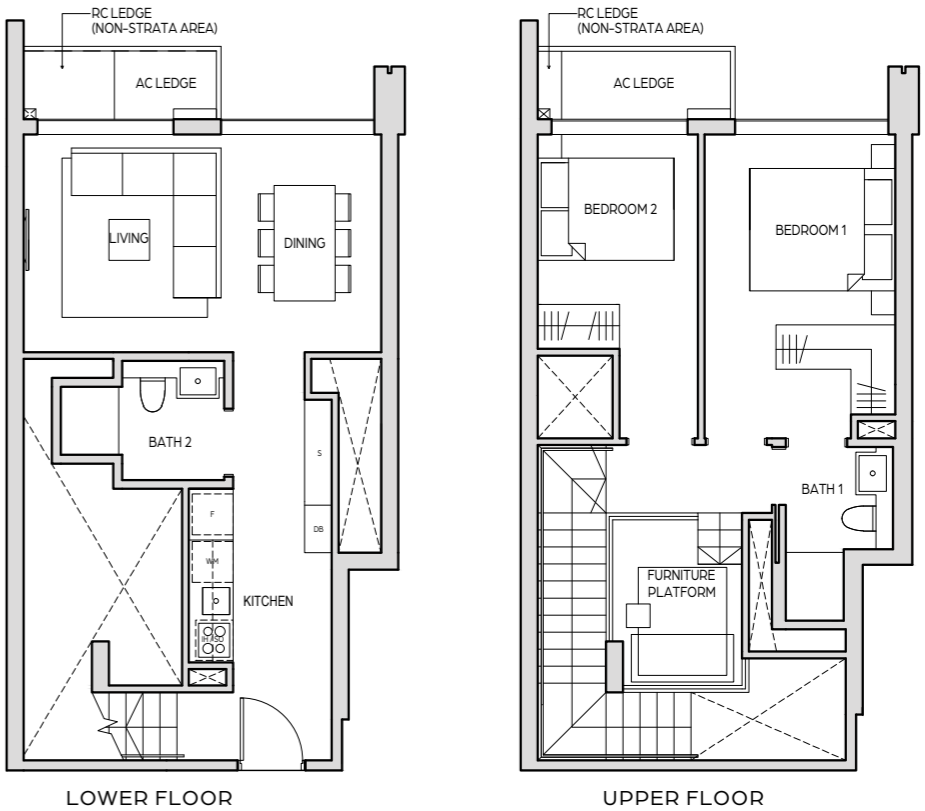
All areas and measurements stated in this floor plan are approximate and subject to final survey. The layout / location of wardrobes, kitchen cabinets and appliances, DB, door swing directions and sanitary wares are subject to final design. BP Approval No. A1606-00001-2018-BP02 dated 10 June 2019

2 BEDROOM DUPLEX

TYPE B5-DP

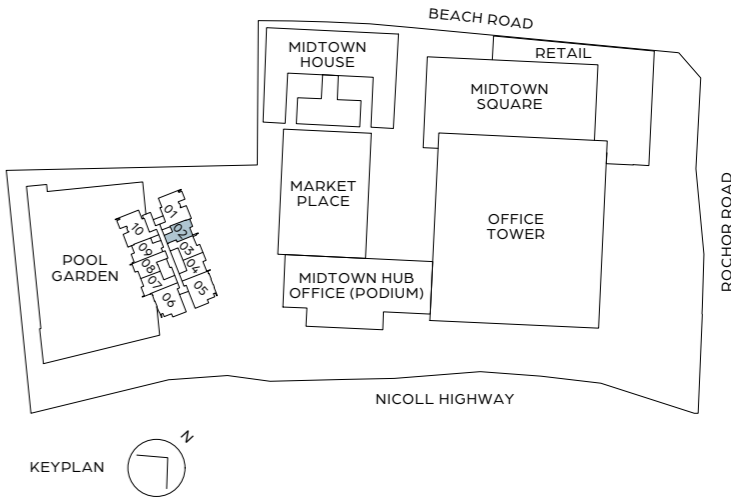
92 sq m / 990 sq ft

#26-02 | #28-02 | #30-02 | #32-02



LEGEND (WHERE APPLICABLE)

- |                             |                                |
|-----------------------------|--------------------------------|
| <b>F</b> - FRIDGE           | <b>DB</b> - DISTRIBUTION BOARD |
| <b>WM</b> - WASHING MACHINE | <b>IH</b> - INDUCTION HOB      |
| <b>S</b> - STORAGE          | <b>SO</b> - STEAM OVEN         |



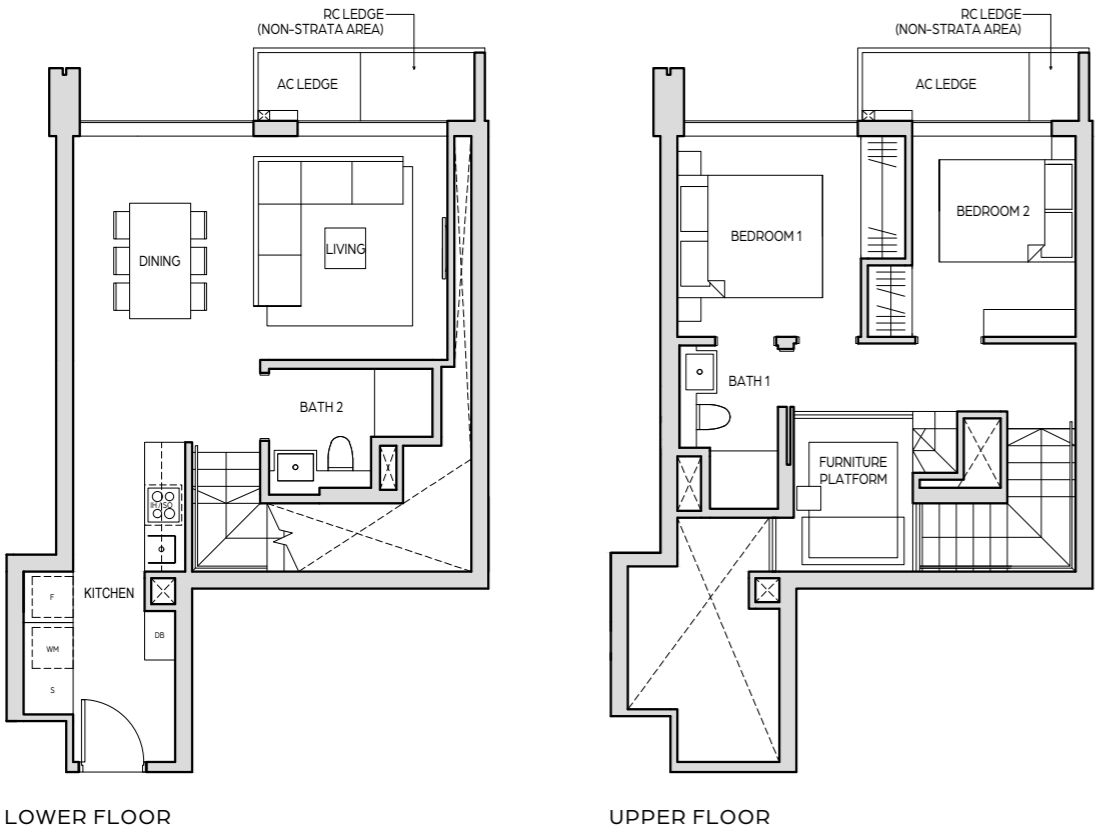
All areas and measurements stated in this floor plan are approximate and subject to final survey. The layout / location of wardrobes, kitchen cabinets and appliances, DB, door swing directions and sanitary wares are subject to final design. BP Approval No. A1606-00001-2018-BP02 dated 10 June 2019

2 BEDROOM DUPLEX

TYPE B6-DP

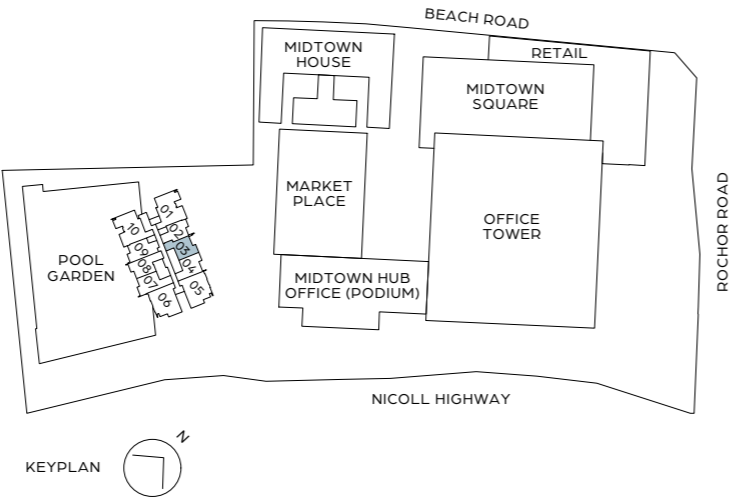
94 sq m / 1012 sq ft

#26-03 | #28-03 | #30-03 | #32-03



LEGEND (WHERE APPLICABLE)

- |    |                   |    |                      |
|----|-------------------|----|----------------------|
| F  | - FRIDGE          | DB | - DISTRIBUTION BOARD |
| WM | - WASHING MACHINE | IH | - INDUCTION HOB      |
| S  | - STORAGE         | SO | - STEAM OVEN         |



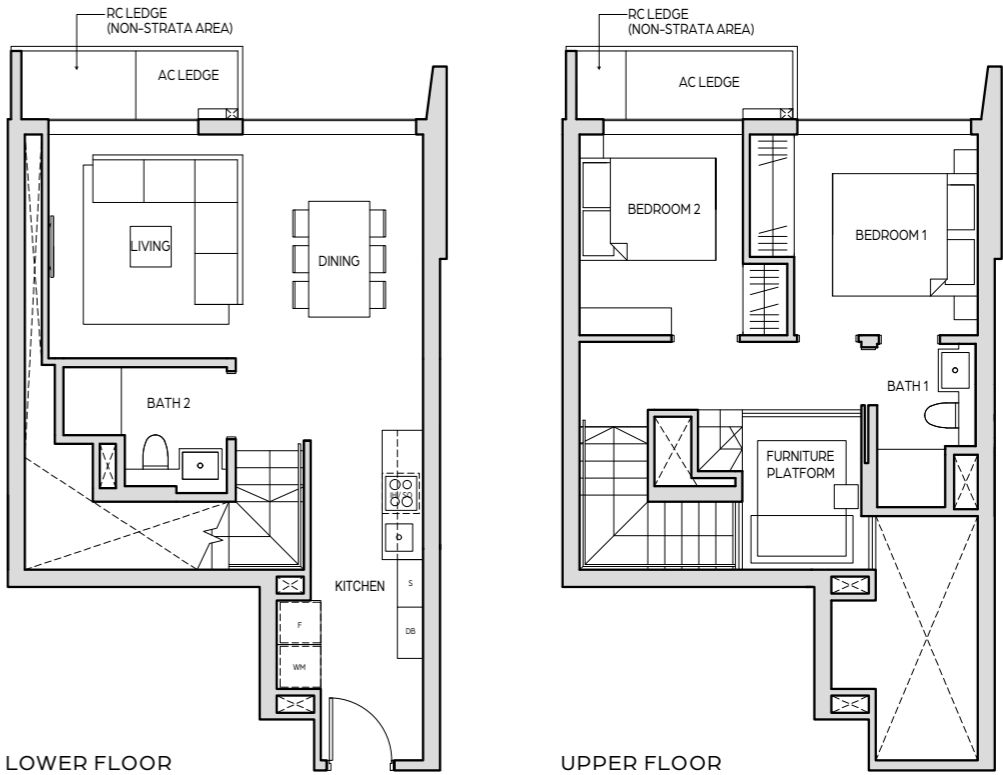
All areas and measurements stated in this floor plan are approximate and subject to final survey. The layout / location of wardrobes, kitchen cabinets and appliances, DB, door swing directions and sanitary wares are subject to final design. BP Approval No. A1606-00001-2018-BP02 dated 10 June 2019

2 BEDROOM DUPLEX

TYPE B6a-DP

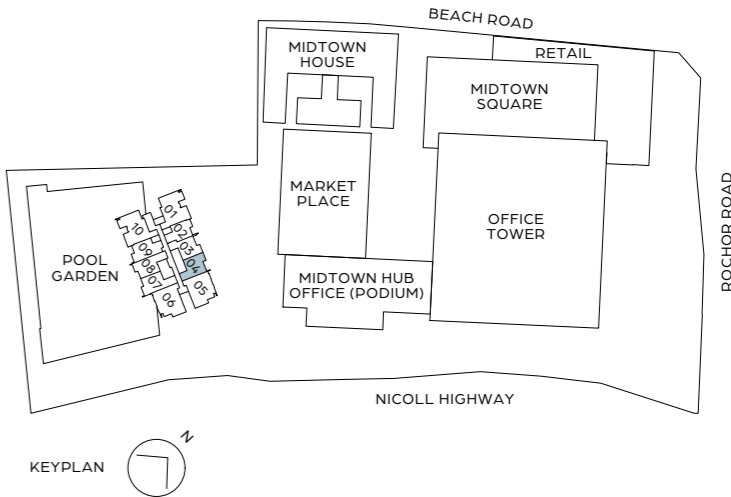
94 sq m / 1012 sq ft

#26-04 | #28-04 | #30-04 | #32-04



LEGEND (WHERE APPLICABLE)

- |    |                   |    |                      |
|----|-------------------|----|----------------------|
| F  | - FRIDGE          | DB | - DISTRIBUTION BOARD |
| WM | - WASHING MACHINE | IH | - INDUCTION HOB      |
| S  | - STORAGE         | SO | - STEAM OVEN         |



All areas and measurements stated in this floor plan are approximate and subject to final survey. The layout / location of wardrobes, kitchen cabinets and appliances, DB, door swing directions and sanitary wares are subject to final design. BP Approval No. A1606-00001-2018-BP02 dated 10 June 2019

2 BEDROOM DUPLEX

TYPE B7-DP

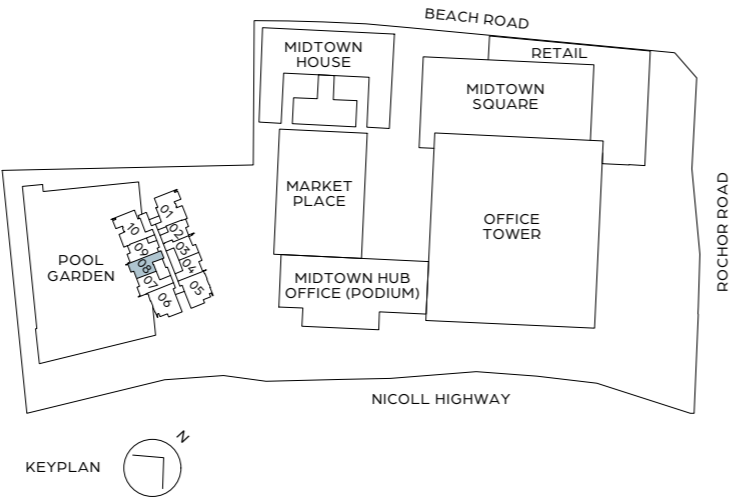
95 sq m / 1023 sq ft

#26-08 | #28-08 | #30-08 | #32-08



LEGEND (WHERE APPLICABLE)

- |    |                   |    |                      |
|----|-------------------|----|----------------------|
| F  | - FRIDGE          | DB | - DISTRIBUTION BOARD |
| WM | - WASHING MACHINE | IH | - INDUCTION HOB      |
| S  | - STORAGE         | SO | - STEAM OVEN         |



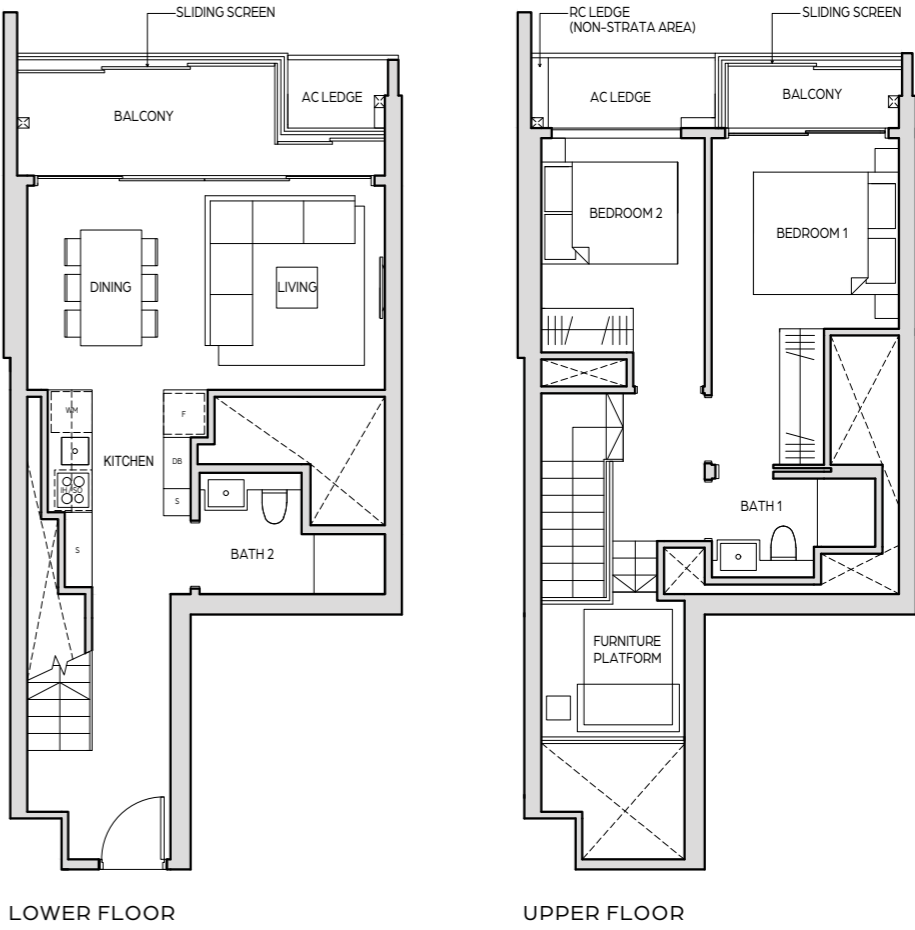
All areas and measurements stated in this floor plan are approximate and subject to final survey. The layout / location of wardrobes, kitchen cabinets and appliances, DB, door swing directions and sanitary wares are subject to final design. BP Approval No. A1606-00001-2018-BP02 dated 10 June 2019

2 BEDROOM DUPLEX

TYPE B7a-DP

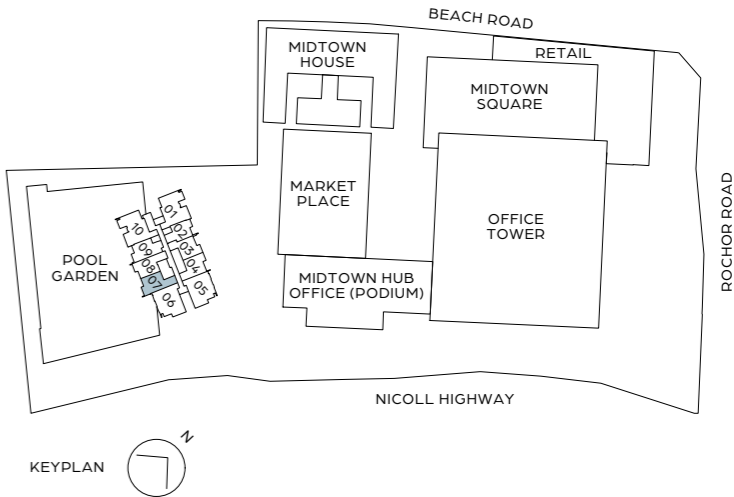
95 sq m / 1023 sq ft

#26-07 | #28-07 | #30-07 | #32-07



LEGEND (WHERE APPLICABLE)

- |    |                   |    |                      |
|----|-------------------|----|----------------------|
| F  | - FRIDGE          | DB | - DISTRIBUTION BOARD |
| WM | - WASHING MACHINE | IH | - INDUCTION HOB      |
| S  | - STORAGE         | SO | - STEAM OVEN         |



All areas and measurements stated in this floor plan are approximate and subject to final survey. The layout / location of wardrobes, kitchen cabinets and appliances, DB, door swing directions and sanitary wares are subject to final design. BP Approval No. A1606-00001-2018-BP02 dated 10 June 2019

## 3 BEDROOM DUPLEX SETUPS



### SETUP 1: RESIDENTIAL

The 3-bedroom duplex is designed to cater to the whole family in mind. The upper level has two bedrooms, each with its ensuite bathroom for complete privacy. The built-in platform can be used as a quiet study, while the balcony looks out to the stunning surrounds.

The lower level also has a well-sized bedroom that can accommodate occasional guests or other family members.



### SETUP 2: DUAL KEY\*

When used as a dual key unit, the upper floor of the duplex is complete with full functions and facilities for a family to make the space their home.

The lower level is also fully sufficient and self-contained, with thoughtfully planned spaces for relaxing, cooking, dining and sleeping.

### SETUP 3: HOME OFFICE\*\*

The duplex also offers the flexibility to be configured as an inspiring workspace. The upper level can be set up as a 1-bedroom unit, and the platform can fit a sofa bed comfortably to house guests.

The lower level can be used as an office, accommodating 2 workstations, a director's room and a chic lounge area to entertain and host business partners.



\*FLEXIBLE CONFIGURATION OPTION BY PURCHASER  
^PREVAILING HOME OFFICE GUIDELINES APPLY

# 3 BEDROOM DUPLEX

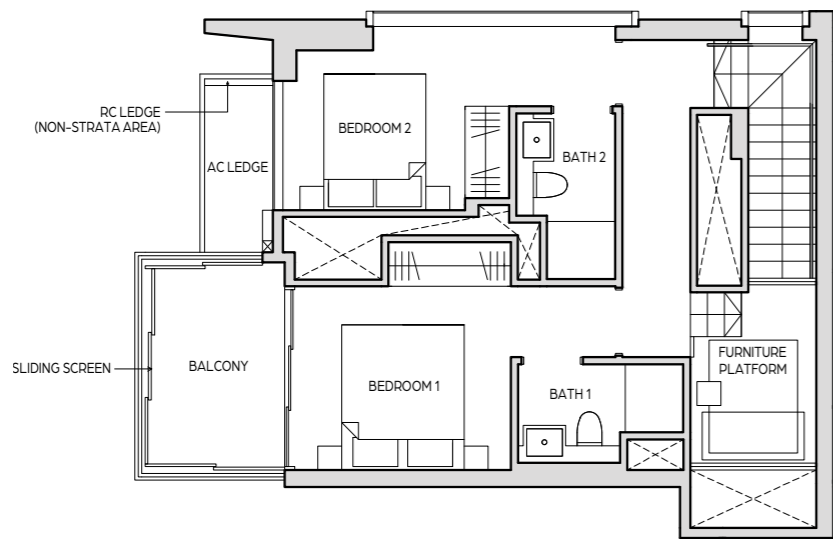
## TYPE B1-DP

123 sq m / 1324 sq ft

#26-06 | #28-06 | #30-06 | #32-06



LOWER FLOOR

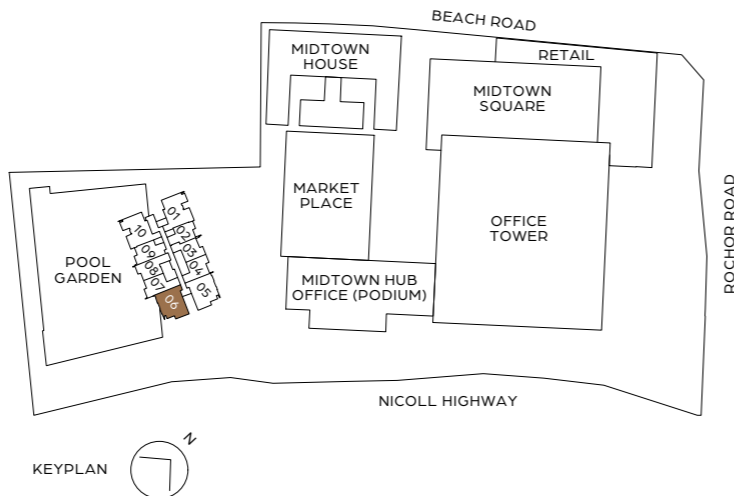


UPPER FLOOR



### LEGEND (WHERE APPLICABLE)

- |    |                   |    |                      |
|----|-------------------|----|----------------------|
| F  | - FRIDGE          | DB | - DISTRIBUTION BOARD |
| WM | - WASHING MACHINE | IH | - INDUCTION HOB      |
| S  | - STORAGE         | SO | - STEAM OVEN         |



All areas and measurements stated in this floor plan are approximate and subject to final survey. The layout / location of wardrobes, kitchen cabinets and appliances, DB, door swing directions and sanitary wares are subject to final design. BP Approval No. A1606-00001-2018-BP02 dated 10 June 2019

# 3 BEDROOM DUPLEX

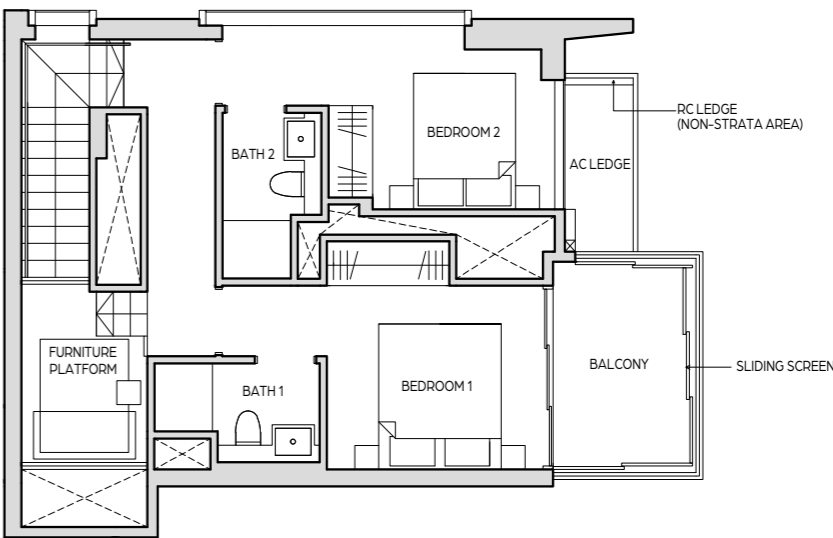
## TYPE B1a-DP

123 sq m / 1324 sq ft

#26-05 | #28-05 | #30-05 | #32-05



LOWER FLOOR

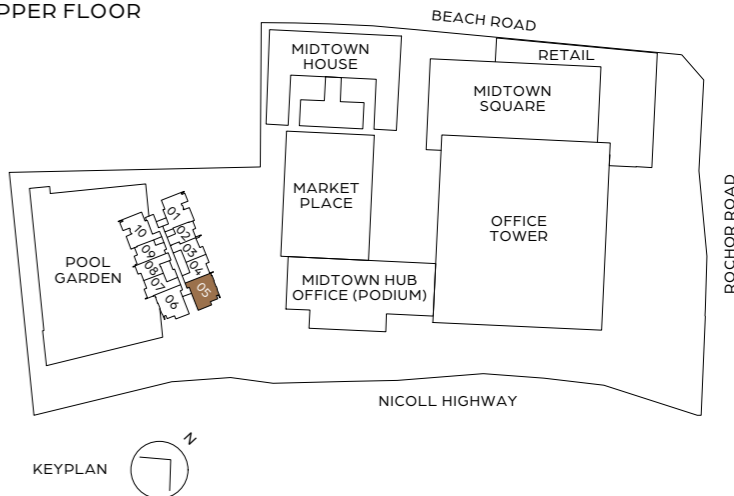


UPPER FLOOR



### LEGEND (WHERE APPLICABLE)

- |    |                   |    |                      |
|----|-------------------|----|----------------------|
| F  | - FRIDGE          | DB | - DISTRIBUTION BOARD |
| WM | - WASHING MACHINE | IH | - INDUCTION HOB      |
| S  | - STORAGE         | SO | - STEAM OVEN         |



All areas and measurements stated in this floor plan are approximate and subject to final survey. The layout / location of wardrobes, kitchen cabinets and appliances, DB, door swing directions and sanitary wares are subject to final design. BP Approval No. A1606-00001-2018-BP02 dated 10 June 2019